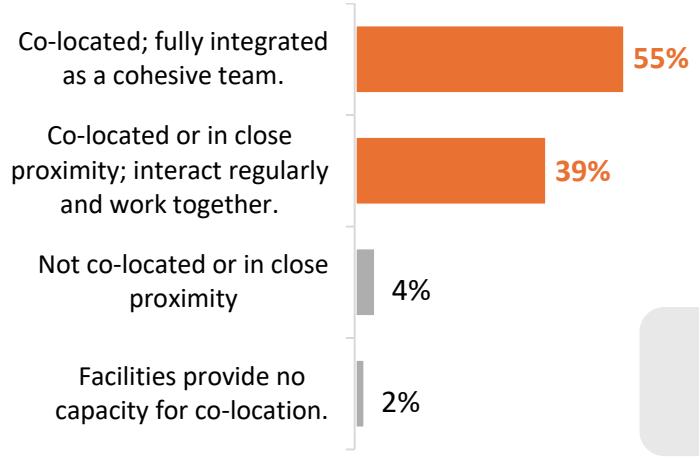


# LANDSCAPE OF STUDENT HEALTH SERVICE PROGRAMS (SHSP) SURVEY RESULTS

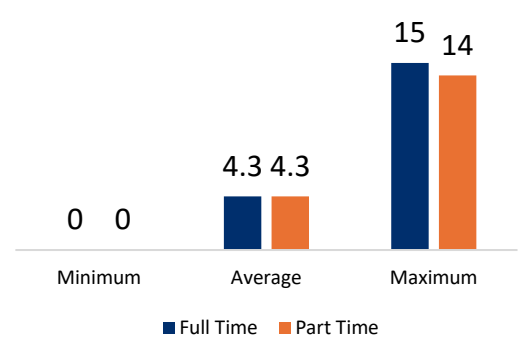
STRUCTURE

## Integration

**97%** of colleges have co-located clinical & mental health services.



## 2023-24 Staffing



**67%** of colleges reported having a structured peer health support and education program.

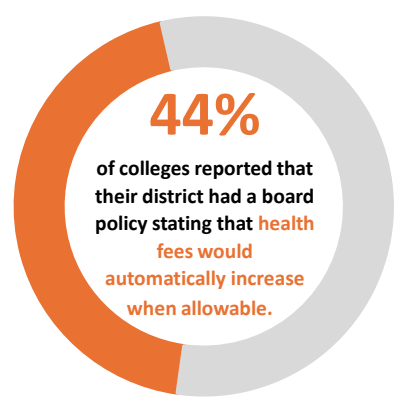
HEALTH FEES

## 2023-24 Semester Health Fees



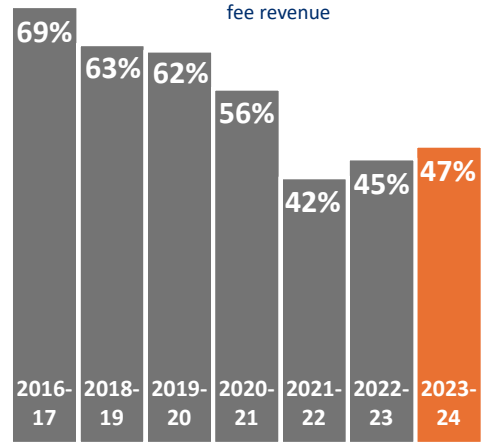
## Board Policies

Policies with an automatic increase clause



## SHSP Expenditures

Percentage of health services expenditures funded >90% by health fee revenue



ALL VISITS

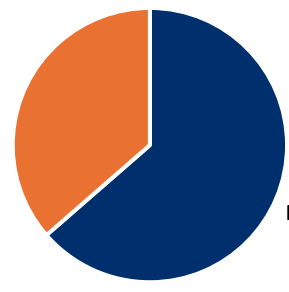
**15,376**

Unique mental health service visits

**26,865**

Unique clinical nursing/medical service visits

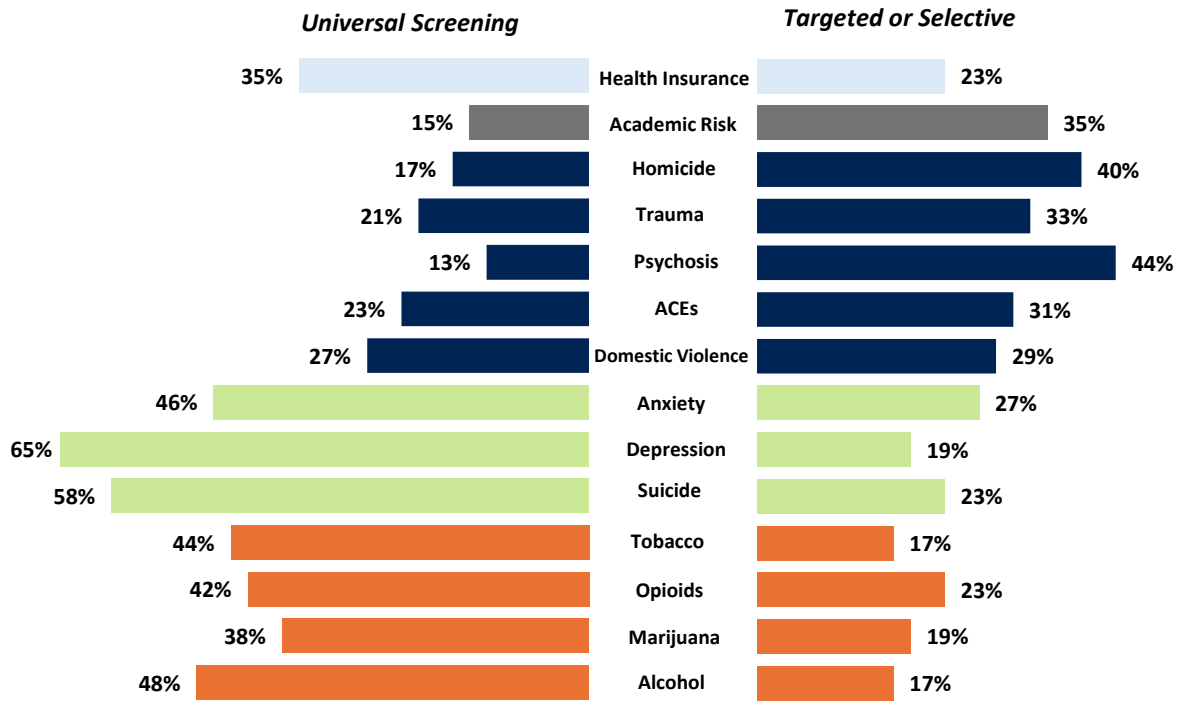
**36%**  
Mental Health Visits



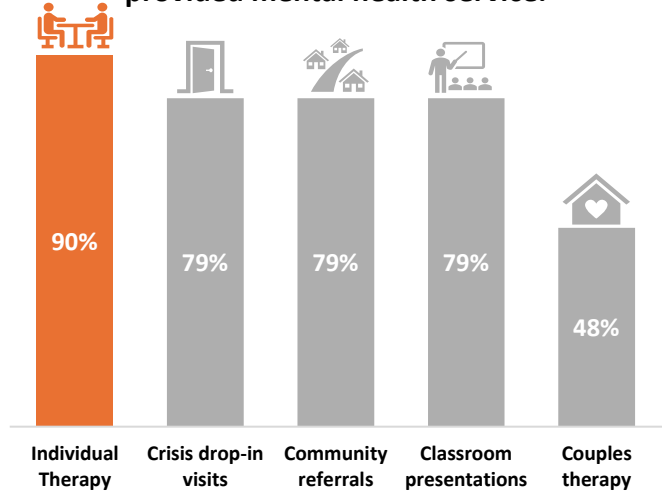
**64%**  
Clinical Nursing/Medical

## Percent of Colleges Engaged in Screening

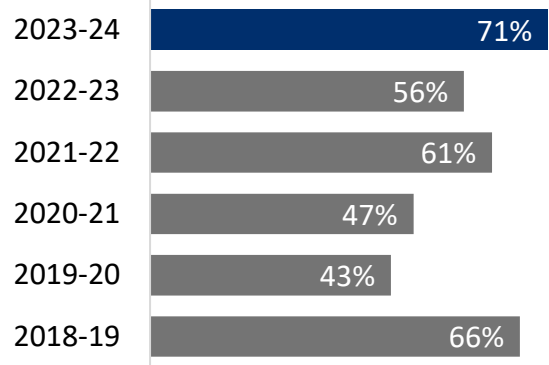
California Community Colleges most often conducted universal screenings for **mental health challenges**, while targeted or selective screenings for **psychosocial risk factors** were more common.



### Individual therapy was the most frequently provided mental health service.



### Mental Health Counseling Training Program in Past Year



### About the Survey

Since 2008, HSACCC has surveyed its members in California community colleges. For the 2023-24 survey, we are excited to announce our collaboration with the California Community Colleges Chancellor's Office (CCCCO). The 2023-24 survey results are presented with prior survey years for general trends. Comparisons should be made with caution given the different colleges participating in each survey year. Survey results have been used to:

- Inform HSACCC members annually of program/service trends
- Advocate for student health fee increases
- Enhance community college health research

### Number of Survey Responses

